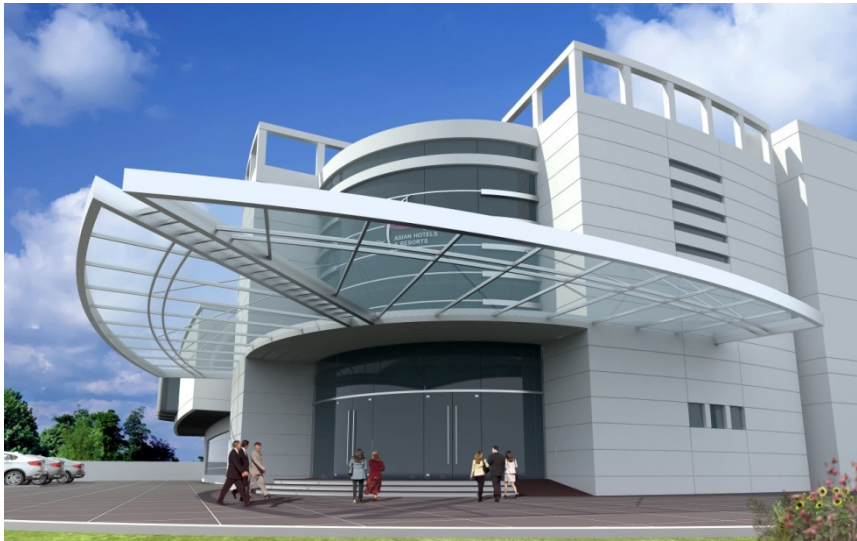


Company Profile



Amir Jafri & Associates

Consulting Architects, Engineers & Interior Designers

108 M, Gulberg III, Lahore, Pakistan

Tel. (042) 35858376 & 35858377. Fax. (042) 35858986

Website: www.amirjafriassociates.com

E-mail: amirjafri_arc@yahoo.com, info@amirjafriassociates.com



Company Profile

Introduction

Amir Jafri & Associates is owned by architect Amir. S. Jafri, run and managed by a team of experienced professionals from various specialized disciplines. Amir Jafri & Associates is committed to rendering state-of-the-art consultancy services in the fields of architecture, engineering, interior design, construction management and allied disciplines. Operating in a professional environment and organized on modern lines, the company is committed to providing high quality services employing current state of knowledge and contemporary practices.

The Services

The company provides comprehensive and integrated services at all stages of a given planning, architectural, interior or engineering design project.

These include preliminary and detailed financial and technical feasibility studies, project appraisal, and formulation of basic design concepts.

At the detailed design stage, comprehensive designs are produced and drawings and specifications developed.

During the bidding phase services, comprise prequalification of contractors, preparation of contract documentation, bid soliciting, appraisal and award of contract.

The services at the construction stage include contract administration, quality assurance, monitoring of time schedules, verification of billing and attending to claims and disputes and advice to the client in all aspects of his contractual liabilities and rights.

The extent of services required for a specific project is tailored to suit the needs of the individual client. Often specialised services are offered to other architectural and engineering consulting offices in disciplines which are not their major fields of expertise.

The services offered include evaluation of existing projects for upgrading and expansion, to establish continued fitness for the required purpose or to study suitability for a proposed



alternate use. Restoration, conservation, refurbishment and modernisation projects can be undertaken and complete range of services offered.

Damage through natural or other hazards, like fire, earthquake, wind and accidents can be studied and detailed investigations carried out on all aspects of the problem.

Studies are also undertaken to assess the financial, economic and technical aspects of proposed projects for national and international organisations and governments.

The company possesses in-house technical expertise in all major areas of its activity and renders services in other areas with associated specialized professionals

Areas of Activities

Key areas, in which Amir Jafri & Associates offers consultancy services, include most major disciplines of planning, architecture, interior design and engineering.

Following is an indicative list of some of these:

■ **Architecture & Interior Design**

Architecture and Interior Design are main areas of specialisation of Amir Jafri & Associates. Detailed design services are offered in the following specific areas:

- ▶ Industrial Buildings
- ▶ Office Buildings
- ▶ Shops and Shopping Centres
- ▶ Hotels and Restaurants
- ▶ Hospitals and Clinics
- ▶ Sports Facilities
- ▶ Theatres and Auditoriums
- ▶ Educational Facilities
- ▶ Libraries
- ▶ Museums and Art Galleries
- ▶ Memorials and Monuments



- ▶ Religious Buildings
 - ▶ Landscape Architecture
 - ▶ Residential Buildings
 - ▶ Parking Structures
 - ▶ Special Projects
 - ▶ Restaurants
 - ▶ Residences
 - ▶ Show Rooms & Shops
 - ▶ Offices
 - ▶ Chimneys and Stacks
 - ▶ Steel Towers and Masts
 - ▶ Special Structures
- **Other Areas**
 - ▶ Structural Engineering
 - ▶ Construction Management

- **Structural Engineering**

Structural engineering is an area of specialisation of Amir Jafri & Associates. Comprehensive design services are offered in the following specific areas:

- ▶ Buildings
- ▶ Liquid Retaining Structures
- ▶ Silos
- ▶ Chimneys
- ▶ Steel Towers and Masts
- ▶ Bridges
- ▶ Special Structures



Capability exists for design with reinforced concrete, pre-stressed concrete, steel, timber and masonry as structural materials. Amongst the references, the American Concrete Institute (ACI), Prestressing Concrete Institute (PCI), American Institute of Steel Construction (AISC), Uniform Building Code (UBC), American Association of State Highway and Transportation Officials (AASHTO), British Standards Institute (BSI) standards and codes and other applicable documents are used.

Complete services are offered including preliminary studies, analysis, design, preparation of engineering and working drawings, development of technical specifications, bills of quantities and engineer's cost estimates. Studies of existing structures may also be undertaken where structural safety needs to be studied or modification is planned.

Using state-of-the-art techniques, full advantage is taken of the recent developments and progress in materials, construction techniques, analysis and design philosophies and computational methods.

■ **Construction Management**

Construction management packages are offered both for employers as well as construction contracting organisations.

The services include construction planning, scheduling, project monitoring, costing and development of cost control systems, preparation of cash, labour, plant, and material histograms, guide-lines for bidding strategies, development of quality assurance programs and advice on preparation and interpretation of construction contracts. The company possesses specialised know how on specification development for use in construction contracts.

Services in the area of construction contracting include professional advice on billing, claims and other disputes, professional liability issues, arbitration and litigation.



Organization

■ 'AMIR JAFRI

Architect & Chief Executive

Professional Education: 5-years degree in Architecture (B.Arch.) 1978-1984 from National College of Arts, Lahore, Pakistan.

Awarded with Mehdi Ali Mirza Award for Academic Excellence on account of being First, in the entire class, in order of merit during all five years.

Date and place of birth: November 10, 1958 – Gujrat

Nationality: Pakistani

Languages: English, Urdu & Punjabi (Excellent in speaking, reading & writing)

Professional Affiliations: Member, Pakistan Council for Architects & Town Planners (MPCATP)

General: Practicing professional architect since 1984. He was awarded with a Mehdi Ali Mirza Award for academic excellence during his undergraduate studies at the NCA. Before starting his own practice, he had actively pursued his profession at the Architecture and Planning Division of NESPAK, as a senior architect, where he was employed from June, 1984 to December 1990.

Since December 1990, Mr. Amir Jafri is doing his own practice and provides consultancy services in the field of Architecture, Engineering & Interior Design.

Mr. Jafri has planned, designed and detailed a large number of national and overseas projects including office, commercial, educational, religious, industrial and residential buildings, housing schemes and landscape design. He has participated in and won numerous national and international design competitions.

Special Interests: Architectural and Interior Design.



Key Staff

■ RIZWAN HAIDER

B.Arch (NCA)

Senior Architect & Project Manager

Mr. Rizwan Haider did his five year's degree course, Bachelors in Architecture from National College of Arts (1998-2003), in first division. His special interests are to take part in interior design, architectural design, detailing and to be involved in the preparation of Architectural Presentation Drawings. He is quite conversant with various computer programs like Auto CAD, 3D Studio Max, Adobe Photoshop. Adobe Premier & Microsoft Office MS Excel, MS Power Point, MS Photo Draw..

He also possesses 6 years working experience in AutoCAD and AccuRender. He can also prepare tender documents, bill of quantities, engineers estimate, along with tender & working drawings.

Since March 2008, he is an active member of design & coordination team of Amir Jafri & Associates.

Nowadays he is actively involved in design & detailing of commercial, industrial & residential projects.

■ YASMEEN AMIR JAFRI

B.Arch (NCA)

Architect & Coordinator

Miss Yasmeen Amir Jafri did her five year's degree course, Bachelors in Architecture from National College of Arts (2006-2011), with Honours and first division. Her thesis project was Lahore Institute of Medical Sciences, comprising state of the art 500 Beds Hospital, Medical and Dental College and Residential Facilities.

Since her graduation, she is an active member of design & coordination team of **Amir Jafri & Associates**.



Her special interests are to take part in interior design, architectural design, detailing and to be involved in the preparation of Architectural Presentation Drawings. She is quite conversant with various computer programs like Auto CAD, 3D Studio Max, Adobe Photoshop & Microsoft Office.

Nowadays she is actively involved in design & detailing of commercial, industrial & residential projects.

- **AHSAN JAHANGIR**
B.Arch. (NCA)

Architect & Coordinator

Mr Ahsan Jahangir did his five year's degree course, Bachelors in Architecture from National College of Arts (2006-2011), with Honours and first division. His thesis project was Digital Media Centre and Research Facility, Lahore. He is an active member of design & coordination team of Amir Jafri & Associates.

His special interests are to take part in architectural design, detailing and to be involved in Architectural Presentation Drawings including preparation of 3-D views. He is quite conversant with various computer programs like Auto CAD, 3D Studio Max, Rhino, Adobe Photoshop & Microsoft Office.

Nowadays he is actively involved in design & detailing of commercial, industrial & residential projects.

- **HASSAN AMIR JAFRI**
B.Arch. (NCA)

Architect & Coordinator

Mr Hassan Amir Jafri did his five year's degree course, Bachelors in Architecture from National College of Arts (2009-2013), with Honours and first division. His thesis project was Institute of Visual & Performing Arts, Lahore. He is an active member of design & coordination team of Amir Jafri & Associates.



Since his graduation, he is an active member of design & coordination team of **Amir Jafri & Associates**.

His special interests are to take part in architectural design, detailing and to be involved in Architectural Presentation Drawings. He is quite conversant with various computer programs like Auto CAD, 3D Studio Max, Adobe Photoshop & Microsoft Office.

Nowadays he is actively involved in design & detailing of commercial, industrial & residential projects.

■ **MOHAMMAD RAFIQUE IQBAL**

B Tech Hon. (Civil)

Construction Engineer

Mr Rafiq Iqbal did his three year's civil engineering diploma from the Government School of Engineering, Rasul, in 'A' grade, with distinction and B Tech Hon. from Preston University in 2011 and securing First Position. Since his graduation in 1969, he has been actively involved in construction industry, in positions of great technical responsibility. Before joining **Amir Jafri & Associates** he has worked with leading national and international construction companies, in Pakistan as well overseas, in the positions of assistant project manager and project manager. He has worked on thermal power houses, grid stations, transmission lines, underground HT and LT cables, microwave towers, natural gas compression stations, communication cables, cement plants, textile mills, commercial buildings, hotels, prefabricated buildings, housing projects, desalination plants, sewerage and sewage treatment plants, irrigation canals, underground irrigation pipes, intercity highway projects, overhead bridges and topographic surveys for 500 KV and 11 KV transmission lines and irrigation projects.

Nowadays Mr. Rafiq is actively involved in construction management and preparation of bills of quantities.



Key Associates

■ MOHAMMAD AYUB, P.E.

B. Sc. Engg. (Civil)

Structural Engineer

Registered professional engineer since 1990. Have actively practiced the profession both within and outside Pakistan. Possesses skill for the analysis, design, detailing and supervision of structural plans for a variety reinforced concrete and steel structures. Also possess the skill for preparation of Bills of Quantities, Engineer's Cost Estimates and Bar Bending Schedules. Have also worked on building and highway construction sites, for site supervision.

Involved in the structural designing of heavy industrial, commercial, institutional and residential buildings, sanitary structures and specialized structures

Familiar with international codes of practice and design standards such as those of the American Concrete Institute (ACI 318-05), UBC-97, SDL American Institute of Steel Construction (AISC), International Council of Building Officials (ICBO) and the British Standards Institution (BSI).

Possess skill for use of computer based techniques for structural analysis and design. Effectively use the software like SAP 2000 Ver 14.0 ETAB Ver 7.5 and a variety of other design programs.

■ MUHAMMAD SAJID, P.E.

B. Sc. Engg. (Civil)

Structural Engineer

Registered professional engineer since 1996. Have actively practiced the profession all over Pakistan. Possesses skills for the analysis, design, detailing and supervision of structural plans for a variety reinforced concrete and steel structures. Also possess the skill for preparation of Bills of Quantities, Engineer's Cost Estimates and Bar Bending Schedules.



Have also performed structural designs for heavy industrial, commercial, institutional and residential buildings, and specialized structures.

Familiar with international codes of practice and design standards such as those of the American Concrete Institute (ACI 318-05), UBC-97, SDI American Institute of Steel Construction (AISC), International Council of Building Officials (ICBO) and the British Standards Institution (BSI).

Possess skill for use of computer based techniques for structural analysis and design. Effectively use the software like SAP 2000 Ver 14.0 ETAB Ver 7.5 and a variety of other design programs.

■ **AHAD JOHRI, P.E.**
M. Sc. Engg. (Civil)

Structural Engineer

Registered professional engineer since 2005. Have actively practiced the profession all over Pakistan. Possesses skill for the analysis, design, detailing and supervision of structural plans for a variety reinforced concrete and steel structures. Also possess the skill for preparation of Bills of Quantities, Engineer's Cost Estimates and Bar Bending Schedules.

He has performed structural designs for heavy industrial, commercial, institutional and residential buildings, and specialized structures.

Familiar with international codes of practice and design standards such as those of the American Concrete Institute: Concrete Structures (ACI 318-05 Code & UBC97) and Steel Structures(AISC Code) including housing, commercial and industrial buildings, For Structural Analysis & Design Tools: ETABS 9.0, SAP 2000, SAFE 8, STAAD PRO v8i

For Computer Aided Design: Autodesk AutoCAD, WaterCAD.

For Office Packages: (MS Word, Excel, Power Point and Outlook Express).



- **Mohammad Zafarullah**
National Dip. in Design (NCA)

Interior Designer

Mr Zafarullah did his four year's National Diploma in Design from National College of Arts in 1971.

Since his graduation, he has worked in various organizations in Pakistan, USA and Canada, in various capacities.

His special interests are to take part in interior design, communication design & graphics and painting (oil medium).

It is worth mentioning, that Mr. Zafarullah is a renowned artist of the country.

He is active member of design & coordination team of Interior Design Department in **Amir Jafri & Associates.**

He is quite conversant with various computer programs like Auto CAD, Adobe Photoshop, Corel Draw and Microsoft Office.



Jobs Profile

■ Commercial

- ▶ Architectural & Interior Design of Sales Service & Spare Parts facilities for Suzuki Gujranwala Motors, Gujranwala
Estimated Covered Area ≈ 30,000 sq ft
- ▶ Architectural & Interior Design of Sales Service & Spare Parts facilities for Suzuki Falcon Motors, Sargodha
Estimated Covered Area ≈ 55,000 sq ft
- ▶ Architectural & Interior Design of Sales Service & Spare Parts facilities for Honda Gateway Motors, Multan Road, Lahore
Estimated Covered Area ≈ 75,000 sq ft
- ▶ Architectural & Interior Design of Sales Service & Spare Parts facilities for Suzuki Sethi Motors, Ferozepur Road, Lahore
Estimated Covered Area ≈ 90,000 sq ft
- ▶ Architectural & Interior Design of Sales Service & Spare Parts facilities for Suzuki Mini Motors, Gulberg, Lahore
Estimated Covered Area ≈ 42,000 sq ft
- ▶ Architectural & Interior Design of Sales Service & Spare Parts facilities for Suzuki Raiwind Motors, Raiwind Road, Lahore
Estimated Covered Area ≈ 45,000 sq ft
- ▶ Architectural & Interior Design of Sales Service & Spare Parts facilities for Suzuki Gujrat Motors, G.T Road, Gujrat
Estimated Covered Area ≈ 100,000 sq ft
- ▶ Architectural & Interior Design of Sales Service & Spare Parts facilities for Suzuki Sheikhupura Motors, Sheikhupura -Faisalabad Road, Sheikhupura
- ▶ Architectural & Interior Design of Sales Service & Spare Parts facilities for Toyota Airport Motors, Defence Road, Lahore.
- ▶ Architectural & Interior Design of Sales Service & Spare Parts facilities for Suzuki Punjab Motors, near EME Society, Lahore
- ▶ Architectural & Interior Design of Sales Service & Spare Parts facilities for Suzuki Burj Motors, near Faisalabad stadium, Faisalabad
- ▶ Architectural & Interior Design of Sales Service & Spare Parts facilities for Suzuki



Punjab Motors, at Multan Road, Lahore

- ▶ Design of tyre show room for Goodyear Tyres at M.M.Alam Road, Gulberg, Lahore
- ▶ Design of agricultural impliments showroom for Ali Corporation at Sundar Industrial Estate, Kot Lakpat.
- ▶ Ziafat Restaurant at 21 C-1, M. M. Alam Road, Gulberg-III, Lahore
Architectural, structural, interior and landscape designs
Project built over a plot measuring 8 kanals, with a building covered area of 4000 sq ft. The internal seating capacity is 175 guests and the outdoor seating capacity, in the barbecue area, is about 250 guests
- ▶ Canteen Building For Pakistan Tobacco Company, Akora Khattak,
- ▶ Krem Og Kafe Coffee Shop at Hussain Chowk, Gulberg III, Lahore
- ▶ Yen Hui Chinese Cuisine at 26 C-3, M. M. Alam Road, Gulberg-III, Lahore
Architectural, structural, interior and landscape designs
Project built over a plot measuring 6 kanals, with a building covered area of 7000 sq ft. The internal seating capacity is 300 guests and the outdoor seating capacity, in the barbecue area, is about 700 guests.
- ▶ Interior Design of Yogurberry Frozen Yogurt Outlet at Y Block, Defence, Lahore.
- ▶ Event Centre for Asian Hotels with conference and banquet facilities to host 2000 persons at Main Boulevard, Gulberg Lahore
- ▶ State of the Art 8 Screens Multiplex Cinema & Shopping Mall, Main Boulevard, Lahore
- ▶ Interior Design of bakery outlet for Bread & Beyond for Dawn Group, Lahore.

■ Office Buildings

- ▶ Design of Office Block for United Wire Industries
- ▶ Design of Office Blocks for Delta Industries at Shekhupura Road, Lahore
- ▶ Design of Office Building for Supreme Feeds & Supreme Farms at Shadman, Lahore
- ▶ Design of Office Building for Sabirs' Poultry at New Garden Town, Lahore.



- ▶ Interior Design & execution of Regional Office for The Bank of Punjab at Faisalabad
- ▶ Interior Design & execution of Bank Branch for The Bank of Punjab at Kutchery Bazar, Faisalabad
- ▶ Interior Design & execution of RCAD for The Bank of Punjab at Satiana Road Faisalabad
- ▶ Interior Design & execution of Bank Branch for The Bank of Punjab at Mandi Faizabad
- ▶ Interior Design & execution of Bank Branch for The Bank of Punjab at New Fawara Chowk, Civil Bazar, Attock
- ▶ Interior Design & execution of Bank Branch for The Bank of Punjab at Chowk Yadgar Branch, Peshawar
- ▶ Interior Design & execution of Head Office for Takaful Pakistan Limited at Shakra-e-Faisal, Karachi
- ▶ Interior Design & execution of Regional Office for Takaful Pakistan Limited at Main Boulevard, Lahore.
- ▶ Design of Office Building for New Shalimar Steel at Badami Bagh, Lahore
- ▶ Design of Office Building for Iqbal Engineering at Industrial Area, Gulberg, Lahore
- ▶ Design of Office Block for Mass Pharma at 17 Km Ferozpur Road, Lahore
- ▶ Design of Office Block for Loga Production at Pakistan Tobacco Company, Akora Khattak, N.W.F.P.
- ▶ Interior Design of Regional Office of The Bank of Punjab at Satiana Road, Faisalabad.
- ▶ Interior Design of Bank Branch for The Bank of Punjab at Kutchery Bazar, Faisalabad.
- ▶ Interior Design of Bank Branch for The Bank of Punjab at Mandi Faizabad.
- ▶ Interior Design of RCAD Office for The Bank of Punjab at Satiana Road, Faisalabad.



- ▶ Interior Design of Head Office of Takaful Pakistan Limited, Dadex House, Shahr-e-Faisal, Karachi.
- ▶ Interior Design of Main corporate branch and various other branches for The Bank of Punjab at Lahore. (As architect in Nespak)
- ▶ Office Building for Ministry of Housing, Muscat, Sultanate of Oman.(As architect in Nespak)
- ▶ Duty Free Shop, (Renovation and Interior Design). (As architect in Nespak)
- ▶ Interior Design of Office Building for Fauji Fertilizer Company Ltd Lahore. (As an architect in Nespak)
- ▶ Oman Newspaper House, Muscat, Sultanate of Oman. (As an architect in Nespak)

- ▶ Design of Regional Office and Residential Complex for Sadiq Poultry near Chakri
- ▶ Design of 6-Storey Head office Building for Asia Feeds, Multan
- ▶ Refurbishment, interior design and façade uplifting of Wartsila Pakistan at Raiwind Road, Lahore.
- ▶ Refurbishment, interior design and façade uplifting of ICAP House at Thokar Niazbeg, Lahore.
- ▶ Refurbishment, interior design of Auditorium building at ICAP House in Karachi.
- ▶ Design of Head Office building for Adams Milk Products (Pvt) Ltd, Lahore.
- ▶ Design of Head Office building for Adams Milk Products (Pvt) Ltd, Sahiwal
- ▶ Interior Design of Regional office of Kohat Cement Company Ltd at Peshawar.
- ▶ Design of Bachelor Hostel for Kohat Cement Company at Kohat – Covered Area 40,000sft.

■ Industrial

○ Steel & Allied

- ▶ Factory Building for Secco Pak (Pvt.) Ltd.. A Facility for Cold-forming of steel sheets - Covered Area = 43,623 sq ft



- ▶ Factory Building for Chemical Complex Ltd. (Wire Rope Division), Lahore
A Facility for the manufacturing of high-strength concrete pre stressing steel.
(Complete Design) Covered Area = 57,015 sq ft
- ▶ Extension of Manufacturing facilities of United Wire Industries (Pvt) Ltd at
Shiekhupura Road, Lahore

○ Tobacco

- ▶ Building for Leaf Depot. at Gujrat, for Pakistan Tobacco Company Ltd.
- ▶ Building for Boiler House at Akora Khattak, for Pakistan Tobacco Company Ltd.
- ▶ Building for Buying Courts at Gujrat, for Pakistan Tobacco Company Ltd.
- ▶ Building for New Leaf Godown # 1 at PTC Akora Khattak, for Pakistan Tobacco
Company Ltd.
- ▶ Design of Leaf Godown Building at Akora Khattak, for Pakistan Tobacco Company
Ltd.
Covered Area = 65,000 sq ft
- ▶ Extension of Factory Building at Akora Khattak, for Pakistan Tobacco Company
Covered Area = 12,000 sq ft
- ▶ Extension of Factory Building at Akora Khattak, for Pakistan Tobacco Company
- ▶ Extension of Production Facilities Between Existing Godowns #2 & #3 at PTC
Jhelum
- ▶ Building for New Godowns # 14 at PTC Jhelum, for Pakistan Tobacco Company
Ltd.
- ▶ Leaf Godowns for Mr Muqarab Ali Khan at Yar Hussain, District Sawabi;
(Structural Design Review)
- ▶ New Godowns # 11, 12 & 13 at PTC Factory at Jhelum
- ▶ Extension of Factory Building at Jhelum, for Pakistan Tobacco Company
Covered Area = 37,180 sq ft
- ▶ Extension of Green Leaf Threshing (GLT) Plant No. 87 and 89 for PTC, Akora
Khattak Factory
- ▶ Refurbishment of Existing Workers' Toilets at PTC, Akora Khattak Factory



- ▶ Refurbishment of Existing Workers' Toilets at PTC, Jhelum Factory
- ▶ Extension 7 of Green Leaf Threshing (GLT) for PTC, Akora Khattak Factory
- ▶ Design of Leaf Display Centre and Laboratory at PTC, Akora Khattak Factory

○ **Textile And Garments**

- ▶ Factory Building for Peral Knitwear (Pvt.) Ltd., Ferozepur Road, Lahore
(Complete Design)
Covered Area = 32,353 sq ft
- ▶ Leather Garments Factory for Leather Field (Pvt.) Ltd., at Sialkot
- ▶ Factory Building for Delta Knitwear (Pvt.) Ltd. at Gulberg, Lahore

○ **Sports & Recreational**

- ▶ Design of the Ladies' and Children's Pool and Ancillary Structures for Sozo Water Park at Jallo, Near Lahore
- ▶ Design of the Sozo Adventure Park and Ancillary Structures at Lower Topa, Murree

○ **Paper and Board**

- ▶ Design of Zamindara Paper and Board Mills (Pvt.) Ltd., Sheikhpura
- ▶ Design of Prestige Paper and Board Mills Ltd., Raiwind
- ▶ Design of Extension of Shaheen Paper and Board Mills (Pvt.) Ltd., Raiwind
- ▶ Design of Millennium Paper and Board Mills (Pvt.) Ltd., Muridke

○ **Electronics & Electrical**

- ▶ Television Production Facility Pak Elektron Limited (PEL), Lahore

Covered Area = 41,172 sq ft

○ **Leather & Leather Products**

- ▶ Leather Tannery for Shafiq Tanneries (Pvt.) Ltd., Lahore at Muridke-Sheikhpura Road
Covered Area = 29,307 sq ft



- ▶ Design of factory for SS Footmarks at Sunder Industrial Estate, Lahore.

○ **Sports Goods**

- ▶ Football Bladder Manufacturing Facility for Unis-Pak (Pvt.) Ltd., Sialkot
Project comprised design of the factory building, services block and the office block. Covered Area = 37,700 sq ft

○ **Equipment**

- ▶ Energy Meter Production Facility for Pak Elektron Limited (PEL), Lahore
(Architectural and Structural Design)
Covered Area = 46,375 sq ft

○ **Poultry, Hatchery & Feed**

- ▶ Design of Hatchery Building for Five-Star Chicks at Kamoke, Gujranwala
- ▶ Design of Hatchery Building for Big Bird (Pvt) Ltd. At Multan
- ▶ Design of Hatchery Building for Big Bird (Pvt) Ltd at Hyderabad
- ▶ Design of Hatchery Building for Sabirs' Poultry at Sheikhpura
- ▶ Refurbishment of Hatchery Building for Mega Bird at Korangi Creek, Karachi
- ▶ Design of Hatchery Building for Five-Star Chicks at Kamoke, Gujranwala
- ▶ Design of Hatchery Building for SB Poultry at Korangi Creek, Karachi.
- ▶ Design of Hatchery Building for Hi-Tech Poultry Breeders, at Multan
- ▶ Design of Hatchery Building for Hi-Tech Poultry Breeders, at Multan Road, Lahore
- ▶ Design of Hatchery Building for A.W Chicks, at Laliani, Kasur
- ▶ Design of Hatchery Building for A.R Hatcheries, at Faisalabad
- ▶ Design of Hatchery Building for Grand Parent Poultry (Pvt) Ltd. At Bhai Pheru
- ▶ Design of Hatchery Building for Supreme Farms at Sheikhpura
- ▶ Extension of Hatchery Building and Ancillary Buildings for Grand Parent Poultry (Pvt.) Ltd. at Raiwind Road



- ▶ Design of Hatchery Building for Sabirs' Poultry at Multan
- ▶ Design of Hatchery Building for Mega Bird Poultry at Super Highway, Karachi
- ▶ Design of Hatchery Building for HiTech Poultry at Rahim Yar Khan
- ▶ Design of Hatchery Building for Islamabad Farms at Kotri
- ▶ Design of Hatchery Building for Sabirs' Poultry at Port Qasim Karachi
- ▶ Design of Hatchery Building for Sadiq' Poultry near Chakri
- ▶ Design of Hatchery Building for AS Poultry near Kamalia
- ▶ Design of Hatchery Building for JS Poultry near Pattoki
- ▶ Design of Hatchery Building for Big Bird Group near Pattoki

○ **Feed Mills**

- ▶ 60 M. Ton/Hr Feedmill Facility, for Asia Poultry Feeds (Pvt.) Ltd., at Multan
- ▶ Design of Feed mill Complex for Multan Feed Industries at Multan
- ▶ Design of Feed mill Complex for Chenab Feeds at Multan Road, Bhai Pheru
- ▶ Design of Feed mill Complex for Shamim Feed Industries at Bahawalpur
- ▶ Design of Feed mill Complex for Shabbir Feeds at Multan
- ▶ Design of Feed mill Complex for Grand Feeds At Multan Road
- ▶ Design of Feed mill Complex for Big Feeds (Pvt) Ltd. At Raiwind
- ▶ Design of Feed mill Complex for Fast Feeds at Faisalabad
- ▶ Design of Feed mill Complex for Sharif Feed Mills (Pvt) Ltd.at 13 Km off Renala Khurd
- ▶ Design of Feed mill Complex for Khawaja Feeds (Pvt) Ltd. at Multan
- ▶ Design of Feed mill Complex for Dawood Feeds (Pvt) Ltd. at Pattoki
- ▶ Design of 60 M. Ton/Hr. Feed mill Facility, Unit-3 for Asia Poultry Feeds (Pvt.) Ltd., at Port Qasim Karachi



- ▶ Design of Feed mill Complex for Nizami Feeds (Pvt) Ltd, at Sheikhpura
- ▶ Façade Up lifting of Feed mill for SB Feeds (Pvt) Ltd. At Sahiwal
- ▶ Façade Up lifting of Feed mill for SB Feeds (Pvt) Ltd. At Mandra
- ▶ Design of Feed mill Complex for OK Feeds (Pvt) Ltd. near Pattoki
- ▶ Design of Feed mill Facility, for Sabirs' Poultry at Port Qasim Karachi
- ▶ Design of Feed mill Tower for National Feeds (Pvt) Ltd, at Sheikhpura
- ▶ Design of Maize Procurement Centre and Storage Facility of 100,000 Tons for SB Feeds at Deepalpur
- ▶ Design of Grain Procurement Centre and Storage Facility for Unicorn Group at Deepalpur
- ▶ Design of Feed mill Complex for Salva Feeds (Pvt) Ltd. at Okara.
- ▶ Design of Feed mill Complex for JSK Feeds (Pvt) Ltd. at Okara.
- ▶ Design of Feed mill Complex for Al-Nawaz Feeds (Pvt) Ltd. at Layyah.

○ Food

- ▶ Walls Ice Cream Manufacturing Plant at Multan Road, Lahore for Unilever Brothers Pakistan Limited
Covered Area = 80,000 sq ft
- ▶ Ice-cream Manufacturing Facility for Dandy Ice Cream
Estimated Covered Area ≈ 10,000 sq ft
- ▶ Pickling Plant and Vinegar Production Line at Rusayl Industrial Estate, Muscat, Oman
Covered Area = 25,919 sq ft; Estimated Cost = US \$1 M
- ▶ Kinno Processing Plant and ancillary buildings Fruitti Fresh (Pvt) Ltd. at Balwal, Sargodha
Covered Area = 55,000sq ft.
- ▶ Milk Processing Plant and ancillary buildings for Sharif Group near Chaniot
- ▶ Milk Processing Plant and ancillary buildings for Adam's Milk Products (Pvt) Ltd at Sahiwal



○ **Meat & Food Processing Plants**

- ▶ Design of Food Processing Plant for Dawn Foods, near Raiwind, Lahore
- ▶ Design of Poultry Meat and Food Processing Plant for Big Bird Foods, near Pattoki, Lahore
- ▶ Design of Poultry Meat and Food Processing Plant for Sabirs' Foods, near Sheikhupura
- ▶ Design of Meat Processing Plant for Capable Asia, near Manga Mandi, Lahore
- ▶ Design of Poultry Meat and Food Processing Plant for Protein Enterprises, at Nooriabad, Karachi

○ **Pharmaceutical**

- ▶ Extension of Raw Material and Finished Product Warehouse Facilities for Wyeth Laboratories, Lahore.
- ▶ Extension of Production Facilities, Raw Material and Finished Product Warehouse Areas for Mass Pharma at 17 Km Ferozepur Road, Lahore
- ▶ Design of Production facilities for Tarrot Pharma at Sunder Industrial Estate, Lahore

○ **Refrigeration & Air-conditioning**

- ▶ Design of Heat Exchangers Manufacturing Plant Building, for Breeze Industries, at Lahore

○ **Miscellaneous**

- ▶ Pioneer Seed Processing Facilities, Sahiwal, Ancillary Buildings; (Complete Design)
- ▶ Factory building for Coppergat Cables near Gajjumata.

■ **HOSPITALS & CLINICS**

- ▶ Hospital for Dr Shaheen Bano, Township, Lahore
- ▶ Addition of Residential Areas, two new Indoor units, Office Block and Visitors' Inn at Rafiq Anwar Memorial Trust Hospital, Gujranwala
- ▶ Design of Emergency Block at Government Mian Munshi Hospital, Lahore



- ▶ Design of Hospital & Maternity Home For Medicare Trust at Badami Bagh, Lahore
- ▶ Design of Laser Urology Centre at Shadman, Lahore
- ▶ Rafiq Anwar Memorial Trust Hospital, Gujranwala
Refurbishment of Existing Outpatient Department and Private Nursing Unit.
- ▶ Design of Trust Hospital building for Adams Milk Products (Pvt) Ltd, Sahiwal
- ▶ Chaudry Rehmat Ali Trust Hospital (550 Beds), Lahore.

(As architect in Nespak)
- ▶ Federal Postgraduate Medical Institute, Sheikh Zayed Hospital, Lahore

(As architect in Nespak)

■ **SPORTS AND RECREATION**

- ▶ Complete Design of the Ladies' and Children's Pool and Ancillary Structures for Sozo Water Park at Jallo, Near Lahore

■ **INSTITUTIONAL**

- ▶ Training Centre Building at Akora Khattak, for Pakistan Tobacco Company Factory
- ▶ Lantern Club Building at Pakistan Tobacco Company Factory at Jhelum
Covered Area = 10,269 sq ft
- ▶ Design of University of Sargodha, Lahore Campus, for 6000 Students.
- ▶ Design of Girls Hostel for University of Veterinary and Animal Sciences, Lahore.

■ **RELIGIOUS**

- ▶ Noor e-Madina Masjid, Islamabad, Covered Area = 2070 sq ft
- ▶ Mosque for Asia Feeds (Pvt.) Ltd., Multan
- ▶ Mosque for UET-Employees Cooperative Housing Society, Lahore
- ▶ Mosque for Rouché Power Plant at Abdul Hakim, Dist. Muzaffargarh
- ▶ Mosque for Hi-Tech Feeds at Raiwind, Lahore



- ▶ Masjid Al Khalil & Educational Complex over 3 acres site at Muzaffargarh
- ▶ Mosque for Residential Area of Highway Division, Vehari, (C&W Department)
- ▶ Mosque for Din e Haq Trust at Islamabad
- ▶ Mosque for Mehboob Mehmood Brothers, Multan
- ▶ Mosque for O.K Feeds at Patoki, Chunian Road
- ▶ Mosque in Hi-Life Factory near Gajjumata
- ▶ Mosque for National Furnishers, Gujrat
- ▶ Mosque for Sadiq Brothers , Chakri

■ **POWER**

- ▶ All ancillary buildings for 412 Combined Cycle Rousch Power Plant at Abdul Hakim; for Siemens A. G.

■ **RESIDENTIAL**

- ▶ Residential Facilities for Idara e-Minhaj ul-Qur'an
Covered Area = 23,172 sq ft
- ▶ 753 Two storey row houses (171 Category B, 403 Category C and 179 Category D) For Prime Minister's Housing Authority at 50.2 Acres Sind Agriculture Department Site, Wagan Road, Near Sachal Sarmast Road and Police Headquarters, Larkana
- ▶ 276 Three Storey Apartments (168 Category C and 108 Category D) For Prime Minister's Housing Authority at Shahdara Railway Station 11.85 Acres Site
- ▶ 404 Two storey row houses (104 Category B, 210 Category C and 90 Category D) for Prime Minister's Housing Authority at 25 Acre ADS-2 Site at Chishtian
- ▶ 1,050 Four Storey Apartments (525 Category C and 525 Category D) for Prime Minister's Housing Authority at 50 Acres Niazbeg-III Site.
- ▶ Four, Eight and Twelve Storey Al-Hamra Apartments for Habib-Rafiq (Pvt) Ltd. at Raiwind Road, Lahore.



- ▶ Two Storey, Two & Three Bed Room, Executive Apartments at Pakistan Tobacco Company, Akora Khattak, NWFP.
- ▶ **Various private residences at different locations**

■ **Projects with National Engineering Services Pakistan (Pvt) Limited (NESPAK)**

With National Engineering Services Pakistan (Pvt) Limited (NESPAK), in the position of Senior Architect, from June 1984 to December 1990,

Mr. Amir Jafri (Chief Executive of Amir Jafri & Associates) has been responsible for the architectural planning, design, presentation & coordination of the following major projects:

- ▶ Office Block (Four Types) Rumaitha Irrigation Project, Iraq.
(Project Cost: US \$ 3 Million)
- ▶ Oman Newspaper House, Muscat, Sultanate of Oman.
(Project Cost: US \$ 10 Million)
- ▶ High-rise Office Building for UBL, Karachi.
(Project Cost: US \$ 10 Million)
- ▶ Office Building for Ministry of Housing, Muscat, Sultanate of Oman.
(Project Cost: US \$ 15 Million)
- ▶ Corporation House, Lahore
(Project Cost: US \$ 10 Million)
- ▶ Nespak House, Lahore
(Project Cost: US \$ 3.6 Million)
- ▶ Punjab Small Industries Corporation House, Lahore
(Project Cost: US \$ 3.5 Million)
- ▶ Quetta Development Authority Commercial Complex, Quetta.



(Project Cost: US \$ 3 Million)

- ▶ Chaudry Rehmat Ali Trust Hospital (550 Beds), Lahore.

(Project Cost: US \$ 7.5 Million)

- ▶ Educational, Health and Residential Buildings (Proto-type Design), Government of Baluchistan.

(Project Cost: US \$ 5 Million)

- ▶ Government Degree College, Peshawar.

(Project Cost: US \$ 8 Million)

- ▶ Prime Minister's Program of 3 & 5 Marla Houses for poor at all over Pakistan.

(Project Cost: US \$ 2000 Million)

- ▶ Fire Stations for 3x310 MW Thermal Power Stations at Muzaffargarh.

- ▶ Extension of Millat Tractors Ltd, Lahore.

(Project Cost: US \$ 4.5 Million)

- ▶ Gymnasium and Squash Courts at Bolan Medical College, Quetta.

(Project Cost: US \$ 1 Million)

- ▶ Sports Complex, Pakistan Sports Board, Peshawar.

(Project Cost: US \$ 2 Million)

- ▶ Swimming Pool & Gymnasium Complex at Pakistan Military Academy, Kakul.

(Project Cost: US \$ 3 Million)

- ▶ Office Block (Four Types) Rumaitha Irrigation Project, Iraq.

(Project Cost: US \$ 3 Million)

- ▶ International Hockey Stadium, Quetta.

(Project Cost: US \$ 3 Million)

- ▶ Swadi Beach Tourists Resort, Raas Assawadi, Sultanate of Oman.



(Project Cost: US \$ 10 Million)

- ▶ Information and Cultural Complex for Punjab Council of Arts, Rawalpindi.

(Project Cost: US \$ 4 Million)

- ▶ Art Gallery with Al-Hamra Open Air Theatre, Lahore.

(Project Cost: US \$ 1 Million)

- ▶ Walton Memorial, Lahore.

(Project Cost: US \$ 50 Million)

- ▶ Duty Free Shop, (Renovation and Interior Design).

(Project Cost: US \$ 0.5 Million)

- ▶ Interior Design of Office Building for Fauji Fertilizer Company Ltd., Lahore.

(Project Cost: US \$ 1 Million)

- ▶ Interior Design of Main corporate branch and various other branches for The Bank of Punjab at Lahore.

(Project Cost: US \$ 2 Million)

- ▶ Mosque for Pakistan atomic Energy Commission.

- ▶ Mosque & Cafeteria for Millat Tractors Ltd. at Lahore.

(Project Cost: US \$ 1 Million)

- ▶ Beautification of Capital Area, Muscat, Sultanate of Oman

(Project Cost: US \$ 35 Million)

- ▶ Beautification of Roads and Parking Areas, Sohar, Sultanate of Oman

(Project Cost: US \$ 5 Million)

- ▶ Beautification of Roads, Quetta.

(Project Cost: US \$ 3 Million)

- ▶ Tourists Resorts & other Facilities for The Tourism Development Corporation of Punjab. Project Cost: US \$ 2 Million)



Particulars

1.	Life Member Pakistan Council of Architects & Town Planners (PCATP) Registration No.	A-0222
2.	National Tax Number	22-16-0725777



PAKISTAN COUNCIL OF ARCHITECTS AND TOWN PLANNERS

This is to certify that

Ar. Syed Amir Siraj Tajri

*Was registered on the Twelfth Day of January, 2008
as a life Member of the Pakistan Council of
Architects and Town Planners*

*Established in the year one thousand nine hundred and eighty three under the
Pakistan Council of Architects and Town Planners Ordinance (IX of 1983)
promulgated by the President of Pakistan, a body corporate for the regulation
of architecture and town planning professions.*

*In witness whereof the Common Seal has been
hereunto affixed by authority of the Council.*



Shauq Khan
Chairman

Tahier S. Farzi
Registrar

Life Member
Registration No.

A 0 2 2 2

Valid, subject to the provisions of PCATP ordinance 1983 & the Bye-laws/Rules etc. made thereunder.